



FARMACELL
NEW COLLECTION
2019



MASSAGE & SHAPE
BODYSHAPER
ELEGANCE SHAPE
BODYSHAPER+
MESH BODYSHAPER
MEN SHAPER

MASSAGE & SHAPE COLLECTION

MASSAGE & SHAPE COLLECTION products are made of exclusive patented micro-fabric with a “honeycomb texture”, characterized by small hills that enclose smooth areas and produce a massaging effect with the body movements.

The garment is therefore perfectly suited to the body, favouring the body’s normal movements and maintaining its high elasticity. All Massage & Shape products are made using soft microfiber. All products are made in 4 sizes and 3 colors: Black, White and 42 Nude.

MASSAGE

products are made with massaging structure that improve the microcirculation and help to reduce the cellulite effect. The result of the massaging effect could be visible after 30 days of regular use. The products in this line provide no any high compression or shaping effect. Only a gentle pressure that massage the skin. To massage properly the skin the product need to be worn at skin contact.

MASSAGE & SHAPE

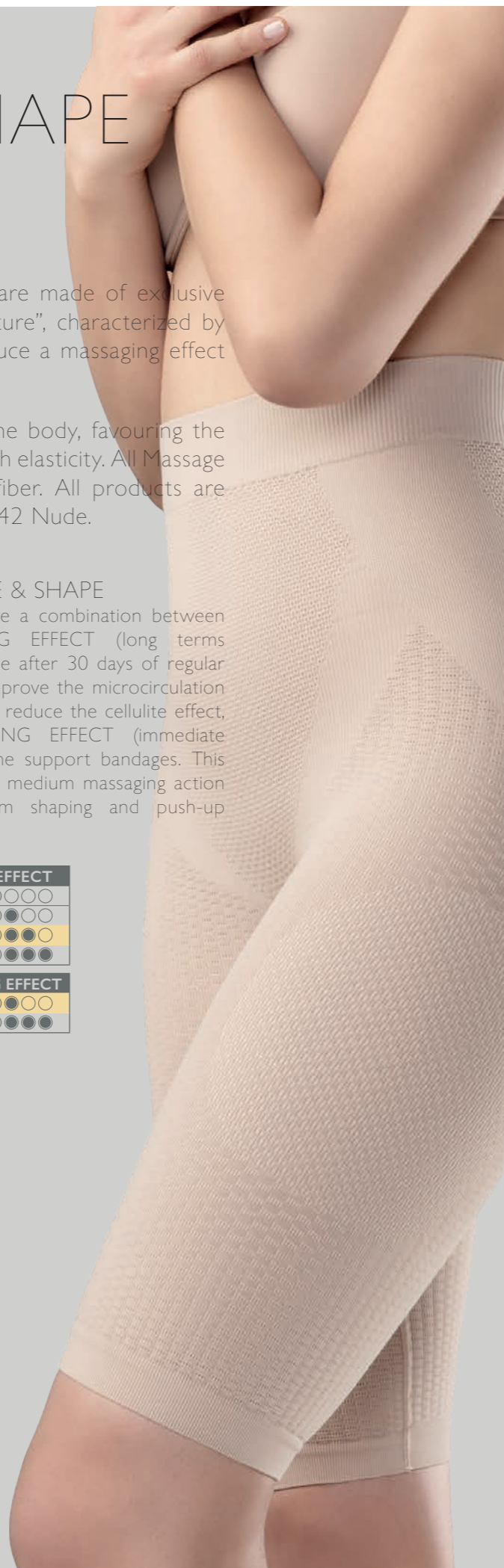
products are a combination between MASSAGING EFFECT (long terms results visible after 30 days of regular use) that improve the microcirculation and help to reduce the cellulite effect, and SHAPING EFFECT (immediate result) of the support bandages. This line provide medium massaging action and medium shaping and push-up effect.

SHAPING EFFECT	
LOW	●○○○
MEDIUM	●●○○
HIGH	●●●○
STRONG	●●●●

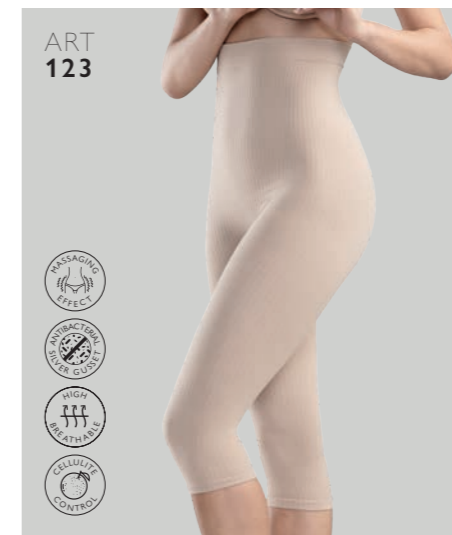
MASSAGING EFFECT	
MEDIUM	●●○○
STRONG	●●●●

SHAPING EFFECT	
LOW	●○○○
MEDIUM	●●○○
HIGH	●●●○
STRONG	●●●●

MASSAGING EFFECT	
MEDIUM	●●○○
STRONG	●●●●



ART 113
MASSAGE
HIGH WAIST
KNEE SHORTS



ART 123
MASSAGE
HIGH WAIST
CAPRI SHORTS



ART 133
MASSAGE
HIGH WAIST
LEGGINGS



ART 302
MASSAGE & SHAPE
SHORTS



ART 312
MASSAGE & SHAPE
KNEE SHORTS



ART 323
MASSAGE & SHAPE
HIGH WAIST CAPRI



ART 342
MASSAGE & SHAPE
CAMISOLE

COLORS

Black White 42 Nude

WASH



COMPOSITION

Art. 113-123-133: 92% PA Nylon - 8% EA Elastane
Art. 302-312-323-342: 85% PA Nylon - 15% EA Elastane

SIZE

	S / M	M / L	L / XL	XXL
IT	38 - 42	42 - 46	46 - 50	50 - 54
FR / ES	34 - 38	38 - 42	42 - 46	46 - 50
EURO / DE	32 - 36	36 - 40	40 - 44	44 - 48
UK	6 - 10	10 - 14	14 - 18	18 - 22
USA	4 - 8	8 - 12	12 - 16	16 - 20
JP	3 - 7	7 - 11	11 - 15	15 - 19

	A	78 - 88 cm 30,7 - 34,6 in	85 - 95 cm 33,5 - 37,4 in	92 - 103 cm 36,2 - 40,6 in	100 - 114 cm 39,4 - 44,9 in
	B	61 - 70 cm 24 - 27,6 in	67 - 76 cm 26,4 - 29,9 in	73 - 85 cm 28,7 - 33,5 in	82 - 96 cm 32,3 - 37,8 in
	C	85 - 94 cm 33,5 - 37 in	91 - 100 cm 35,8 - 39,4 in	97 - 108 cm 38,2 - 42,5 in	105 - 118 cm 41,3 - 46,5 in

BODYSHAPER COLLECTION

This is the FarmaCell Basic compression and shaping products line, made by soft microfiber. All the products in the BODYSHAPER line make a high compression to the body with the result to have STRONG SHAPING effect and reduce the body size immediately once worn.

The compression bandages incorporated in the products make also a modelling effect to make better body silhouette and in some products a great push-up effect.

Products are thin and invisible under the clothes. Products are made in 5 size and 3 colours, Black, White and 42 Nude.

SHAPING EFFECT	
LOW	●○○○○
MEDIUM	●●○○○
HIGH	●●●○○
STRONG	●●●●●

COLORS
 Black
 White
 42 Nude

WASH

COMPOSITION
 85% PA Nylon - 15% EA Elastane

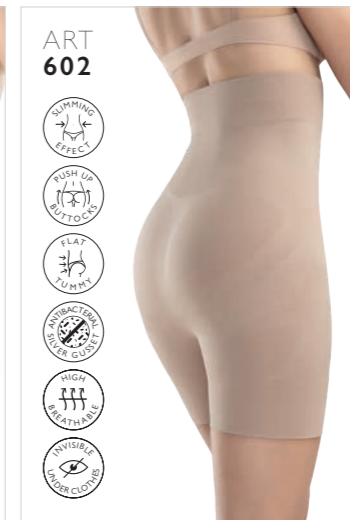
SIZE		S	M	L	XL	XXL
IT		40 - 42	42 - 44	44 - 48	48 - 52	52 - 56
FR / ES		36 - 38	38 - 40	40 - 44	44 - 48	48 - 52
EURO / DE		34 - 36	36 - 38	38 - 42	42 - 46	46 - 50
UK		8 - 10	10 - 12	12 - 16	16 - 20	20 - 24
USA		6 - 8	8 - 10	10 - 14	14 - 18	18 - 22
JP		5 - 7	7 - 9	9 - 13	13 - 17	17 - 21
	A	81 - 88 cm 31.9 - 34.6 in	85 - 92 cm 33.5 - 36.2 in	89 - 100 cm 35 - 39.4 in	97 - 110 cm 38.2 - 43.3 in	105 - 122 cm 41.3 - 48 in
	B	63 - 70 cm 24.8 - 27.6 in	67 - 74 cm 26.4 - 29.1 in	71 - 82 cm 28 - 32.3 in	79 - 92 cm 31.1 - 36.2 in	87 - 104 cm 34.3 - 40.9 in
	C	87 - 94 cm 34.3 - 37 in	91 - 98 cm 35.8 - 38.6 in	95 - 106 cm 37.4 - 41.7 in	103 - 114 cm 40.6 - 44.9 in	111 - 123 cm 43.7 - 48.4 in



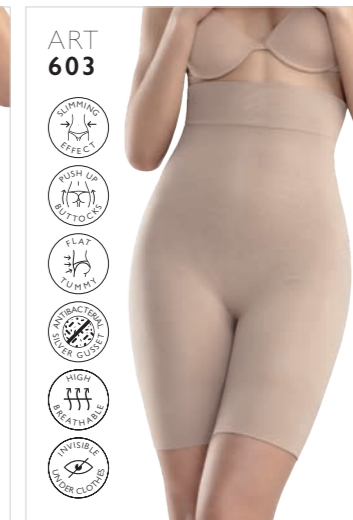
BODYSHAPER
HIGH WAIST
STRING



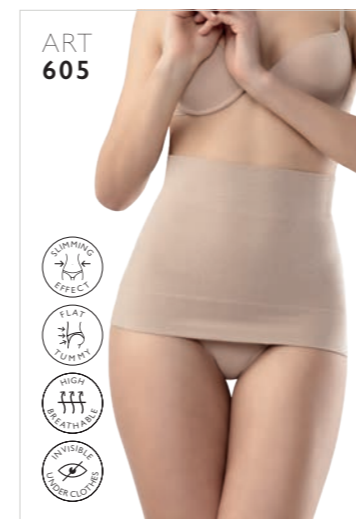
BODYSHAPER
HIGH WAIST
PANTY



BODYSHAPER
HIGH WAIST
SHORTS



BODYSHAPER
HIGH WAIST
KNEE SHORTS



BODYSHAPER
WAIST
BELT



BODYSHAPER
WAIST BELT +
STAYS



BODYSHAPER
OPEN BUST
CAMISOLE



BODYSHAPER
PUSH-UP
CAMISOLE



BODYSHAPER
BODYSUIT



BODYSHAPER
SUPPORT BRA



ELEGANCE SHAPE

WITH
COOLING EFFECT

ELEGANCE SHAPE COLLECTION products are made with an innovative refreshing yarn for extra comfort when your body temperature rises. The thin fabric free of seams on the sides make this garment invisible and discreet under any type of clothing. Cool and breathable fabric.

SHAPING EFFECT	
LOW	●○○○
MEDIUM	●●○○
HIGH	●●●○
STRONG	●●●●

NILIT® BREEZE

LIKE A BREATH OF FRESH AIR, THE REVOLUTIONARY NILIT® BREEZE COOLING YARN KEEPS WEARERS FEELING REFRESHED AND COMFORTABLE WHEN THE TEMPERATURES RISE.

NILIT® BREEZE KEY BENEFITS

COOLING EFFECT

- > Helps maintain a comfortable body temperature during/after physical performance and in hot weather
- > Facilitates optimal physical performance
- > Provides efficient ventilation

UV PROTECTION

- > Results from the unique polymer

SOFT HAND FEEL

- > Ultra soft and smooth sensation on the body

NILIT® BREEZE HAS BEEN INDEPENDENTLY TESTED AND PROVEN TO LOWER BODY TEMPERATURE

LAB TEST

Measured the surface temperature of a thermal sweating mannequin during simulated exercise and rest phases, wearing one sleeve knit with NILIT® Breeze and a reference sleeve with a comparable yarn.

RESULTS

Showed the body temperature to be almost 1°C lower with the NILIT® Breeze sleeve than with the comparable sleeve.

TESTING PERFORMED BY

Centexbel Textile Research Center in Belgium.



ELEGANCE SHAPE BRIEFS
COOLING EFFECT



ELEGANCE SHAPE SHORTS
COOLING EFFECT



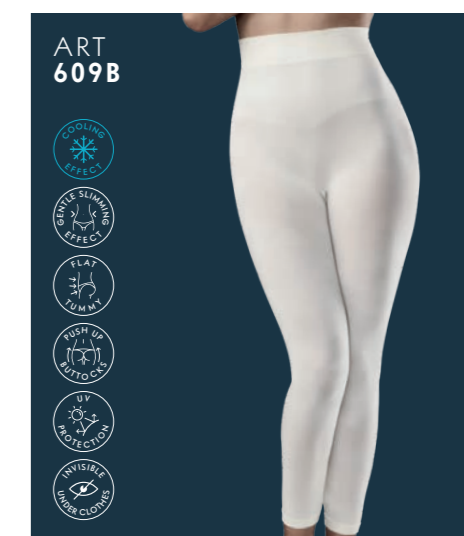
ELEGANCE SHAPE OPEN BUST CAMISOLE
COOLING EFFECT



ELEGANCE SHAPE CAMISOLE
COOLING EFFECT



ELEGANCE SHAPE OPEN BUST BODY
COOLING EFFECT



ELEGANCE SHAPE LEGGINGS
COOLING EFFECT

COLORS

Black White 42 Nude 55 Ivory

WASH



COMPOSITION

75% PA Nylon - 25% EA Elastane

SIZE

		S/M	L/XL	XXL
IT		38 - 44	44 - 50	50 - 56
FR/ES		34 - 40	40 - 46	46 - 52
EURO/DE		32 - 38	38 - 44	44 - 50
UK		6 - 12	12 - 18	18 - 24
USA		4 - 10	10 - 16	16 - 22
JP		3 - 9	9 - 15	15 - 21
	A	78 - 92 cm 30,7 - 36,2 in	89 - 103 cm 35 - 40,6 in	100 - 122 cm 39,4 - 48 in
	B	61 - 74 cm 24 - 29,1 in	71 - 85 cm 28 - 33,5 in	82 - 104 cm 32,3 - 40,9 in
	C	85 - 98 cm 33,5 - 38,6 in	95 - 108 cm 37,4 - 42,5 in	105 - 123 cm 41,3 - 48,4 in



BODYSHAPER+ COLLECTION

Products in this line are made using an **innovative fiber that uses far infrared rays (FIR) to gently warm the deeper layers of the skin**, invigorating and trimming the body by reducing imperfections caused by cellulite and fatty tissue (adiposes)¹. The gentle heat emitted by the fibers helps to sculpt body and reduce the appearance of "orange peel" skin.

Wearing products made with this innovative fiber has been shown to reduce fat mass, tighten skin, and visibly reduce buttocks and thigh circumference¹. As a result we have a **combination between Shaping and Cosmetic effect**.

NILIT® INNERGY

Proven and tested benefits¹:

- + Enhances skin elasticity
- + Reduces fat mass
- + Improves skin compactness
- + Improves skin smoothness
- + Reduces the appearance of "orange peel" effect
- + Proven anti-odor properties²
- + Proven UV protection³
- + Repeated washing does not reduce the action of the Shorts, which keeps its effectiveness unchanged over time.

SHAPING EFFECT	
LOW	●○○○
MEDIUM	●●○○
HIGH	●●●○
STRONG	●●●●

¹ Based on an independent scientific study conducted by Bio Basic Europe and University of Pavia, Italy
² Independent lab - SGS Textile laboratory (Taiwan) - Antimicrobial test with proven anti-odor efficiency test report no. TX80106/2012/HH
³ Independent lab - Testex, AG (Switzerland)



BODYSHAPER+
KNEE SHORTS
COSMETIC BENEFITS



BODYSHAPER+
LEGGINGS
COSMETIC BENEFITS

Both products have a fold-over waist band



SIZE
Five sizes available, from S to XXL
See the BODYSHAPER size table

COLOR
Black

WASH
30° X [no iron] X [no dry clean] X [no bleach]

COMPOSITION
87% PA Nylon - 13% EA Elastane



MESH BODYSHAPER WAIST BELT + STAYS

SHAPING EFFECT	
LOW	●○○○
MEDIUM	●●○○
HIGH	●●●○
STRONG	●●●●

ART 605RS

Elastic mesh tummy control girdle to shape tummy and hips. Made of an innovative, super-elastic, light and breathable perforated fabric for maximum comfort. Three soft plastic rear splints adapt the garment to your body and prevent it from rolling while supporting your back. Its thin fabric makes it invisible and discreet under any type of clothing. Strong compression for an immediate flat stomach and hip reducing effect.



3 BACK STAYS TO AVOID ROLLING



HIGH COMPRESSION EFFECT



HIGH BREATHABLE FABRIC



FRESH AND INVISIBLE UNDER CLOTHES

COLOR
Black

WASH
30° X [no iron] X [no dry clean] X [no bleach]

COMPOSITION
60% PA Nylon - 40% EL Elastodiene

SIZE

	XS	S	M	L	XL	XXL
Waist	60 - 72 cm	70 - 82 cm	80 - 92 cm	90 - 102 cm	100 - 112 cm	110 - 122 cm
Waist	23.6 - 28.4 in	27.6 - 32.3 in	31.5 - 36.2 in	35.4 - 40.2 in	39.4 - 44.1 in	43.3 - 48 in

MEN SHAPER

FARMACELL MEN SHAPER IS A HIGH QUALITY PRODUCT, MADE IN ITALY, AND PRODUCED WITH HIGH TECH EQUIPMENT USED FOR MANUFACTURING AND FINISHING. THE COMPANY EMPLOYS PRECISION QUALITY CONTROL MEASURES DURING PROCESSING AND PACKAGING, AND THE GARMENTS ARE MADE WITH HIGH QUALITY FABRICS.

THROUGH THE USE OF THE MOST ADVANCED TECHNOLOGY THE PRODUCT LINE WAS CREATED WITH VARIED COMPRESSIONS FOR THE BODY'S DIFFERENT PROBLEM AREAS, IN ORDER TO OBTAIN AN EFFECTIVE SHAPING OF THE BODY.

FARMACELL MEN SHAPER HAS COMPLETE ADHERENCE TO THE SKIN WITHOUT PINCHING OR SQUEEZING. THERE IS NO UNSIGHTLY AND UNCOMFORTABLE FOLD BECAUSE OF THE SEAMLESS TECHNOLOGY. THE GARMENT IS THEREFORE PERFECTLY SUITED TO THE

BODY, FAVOURING THE BODY'S NORMAL MOVEMENTS AND MAINTAINING ITS HIGH ELASTICITY.

FARMACELL MEN SHAPER GENTLY CONTAINS AND SHAPES THE STOMACH, HIPS, CHEST AND THE SURROUNDING AREA THROUGH AN INNOVATIVE SYSTEM OF STITCHES COMBINED WITH ELASTIC THREADS. THE GARMENTS PERFORM PRESSURE CONTAINMENT AT THE WAIST, HIPS AND CHEST TO SHAPE WITHOUT SQUEEZING, WHICH IMMEDIATELY GIVES THE BODY A MORE PHYSICAL, AND MORE IN-SHAPE, LOOK.



STRONG COMPRESSION EFFECT



HIGH BREATHABLE FABRIC



ANTI BACTERIAL SILVER GUSSET



NATURAL COTTON FABRIC



FRESH AND INVISIBLE UNDER CLOTHES

SHAPING EFFECT	
LOW	●○○○
MEDIUM	●●○○
HIGH	●●●○
STRONG	●●●●

SHAPER REFRESHING

NILIT[®] BREEZE

PRODUCTS ARE MADE WITH AN INNOVATIVE REFRESHING YARN FOR EXTRA COMFORT WHEN YOUR BODY TEMPERATURE RISES. THE THIN FABRIC FREE OF SEAMS ON THE SIDES MAKE THIS GARMENT INVISIBLE AND DISCREET UNDER ANY TYPE OF CLOTHING. COOL AND BREATHABLE FABRIC.



COOLING COMFORT FIBER



HIGH BREATHABLE FABRIC



HIGH COMPRESSION EFFECT



UV PROTECTION PROPERTIES



FRESH AND ULTRA SOFT HAND FEEL

SHAPING EFFECT	
LOW	●○○○
MEDIUM	●●○○
HIGH	●●●○
STRONG	●●●●



SUPERIOR HEATING EFFECT



ECOLOGICAL MADE WITH COFFEE RESIDUE



POWERFUL DEODORIZING EFFECT



ANTI BACTERIAL PROPERTIES



COMFORTABLE AND INVISIBLE UNDER CLOTHES

SIZE	S	M	L	XL	XXL
A	89 - 94 cm 35 - 37 in	95 - 104 cm 37,4 - 40,9 in	105 - 114 cm 41,3 - 44,9 in	115 - 124 cm 45,3 - 48,8 in	125 - 132 cm 49,2 - 52 in
C	69 - 78 cm 27,2 - 30,7 in	79 - 86 cm 31 - 34,6 in	89 - 99 cm 35 - 39 in	100 - 109 cm 39,4 - 42,9 in	110 - 117 cm 43,3 - 46,1 in

COLORS

BLACK WHITE GREY

WASH



ART 402
MEN SHAPER BOXER
WHITE, BLACK, GREY
50% PA - 39% CO - 11% EA



ART 402S
FOUR BACK STAYS TO AVOID ROLLING
MEN SHAPER BOXER+STAYS
BLACK
50% PA - 39% CO - 11% EA



ART 405
MEN SHAPER WAIST BELT
WHITE, BLACK
85% PA - 15% EA



ART 405BS
FOUR BACK STAYS TO AVOID ROLLING
MEN SHAPER REFRESHING WAIST+STAYS
WHITE, BLACK
75% PA - 25% EA



ART 411
MEN SHAPER BRIEFS
WHITE, BLACK, GREY
50% PA - 39% CO - 11% EA



ART 417
MEN SHAPER TANK TOP
WHITE, BLACK, GREY
50% PA - 39% CO - 11% EA



ART 417B
MEN SHAPER REFRESHING TANK TOP
WHITE, BLACK
87% PA - 13% EA



ART 418
MEN SHAPER TOTAL TANK
WHITE, BLACK, GREY
50% PA - 39% CO - 11% EA



ART 419
MEN SHAPER T-SHIRT
WHITE, BLACK, GREY
50% PA - 39% CO - 11% EA



ART 419B
MEN SHAPER REFRESHING T-SHIRT
WHITE, BLACK
87% PA - 13% EA



ART 419H
MEN SHAPER HEATING T-SHIRT
BLACK, GREY
92% PA - 8% EA





FarmaCell shapewear

has been tested and developed with the objective of massaging, shaping and redefining the lines of the body. Technical features and the combination of rare and special materials favour shaping and massaging benefits, keeping your skin soft, polished, and healthy.

ITALIAN QUALITY

FarmaCell shapewear products are **100% Made in Italy**, products completely designed, manufactured and packed in Italy, to guarantee high quality standards!

MADE IN ITALY

www.farmacell.com

A brand of



Calze G.T. S.r.l

Via Walter Tobagi 17/19/21
46040 Casaloldo (MN) Italy
www.gtcalze.com